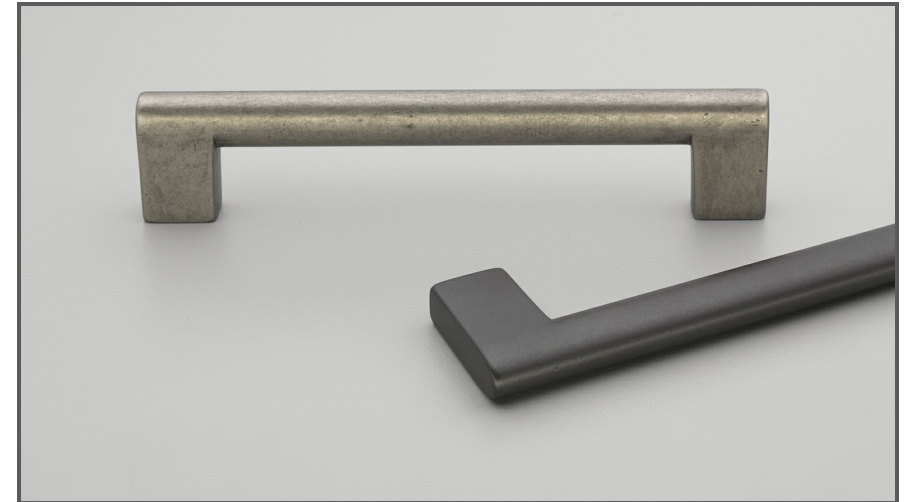

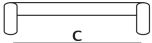

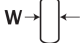
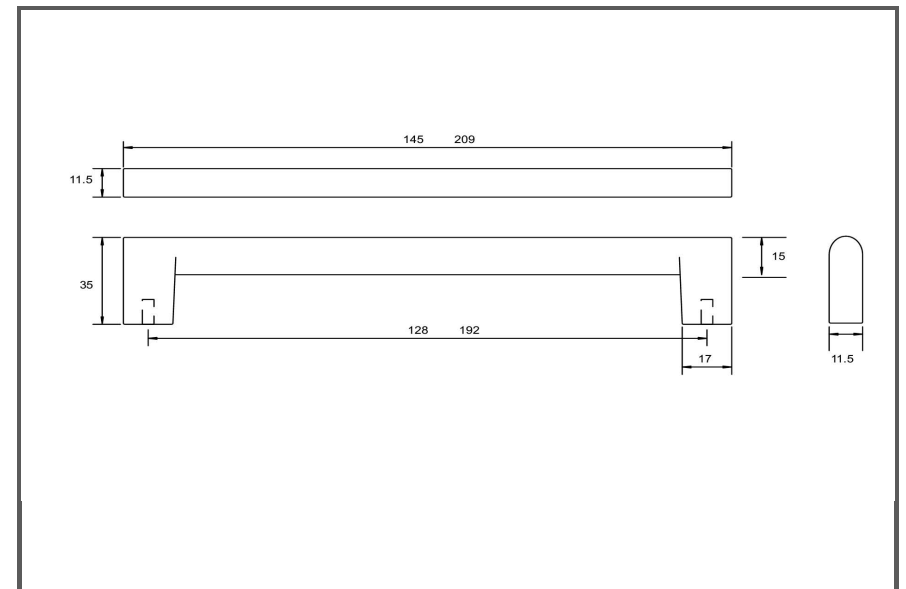


Sydney Head Office Phone: (02) 9542 4991  
 Sydney Head Office Fax: (02) 9542 4662  
 Brisbane 0400 494 368  
 Melbourne 0409 578 885  
 Auckland: 021 964 600  
 Email: sales@kethy.com



|   |   |   |  |
|---|---|---|--|
| Material:   | Die-cast Zinc   |   |  |
| Article Number:   | HT017 / reference C / colour  |   |  |
|  |                      |  |  |
| <b>A</b>  | <b>C</b>  | <b>P</b>  | <b>W</b>   |
| 145   | 128   | 35  | 11.5   |
| 209   | 192   | 35  | 11.5   |
|   |   |   |  |
|   |   |   |  |
|   |   |   |  |
|   |   |   |  |
| Colours available:  | Antique Brass Matt (ABM)<br>Copper Blush Matt (CBM)<br>Charcoal Matt (CHM)<br>Oxidised Tin Matt (OTM) |   |  |



Kethy Australia